



WEBVIEW Introduces NEW Web-i Complete Surface Inspection Cameras Starting at under **\$8,000!**



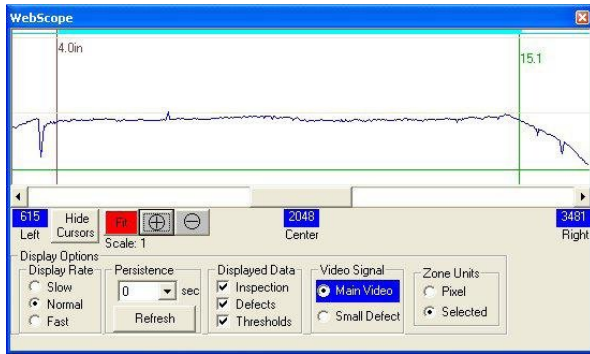
WEBVIEW announces a completely new line of *Web-i* surface inspection cameras. Available with three sensor sizes (1K, 2K, and 4K), the *Web-i* now packs a complete surface inspection system, including imaging, defect classification, and roll maps into a rugged, incredibly affordable system.

The *Web-i* features a high-speed CCD sensor, powerful 32-bit computer, Nikon™ 50 mm lens, USB interface for setup and archiving, and a rugged anodized aluminum housing.

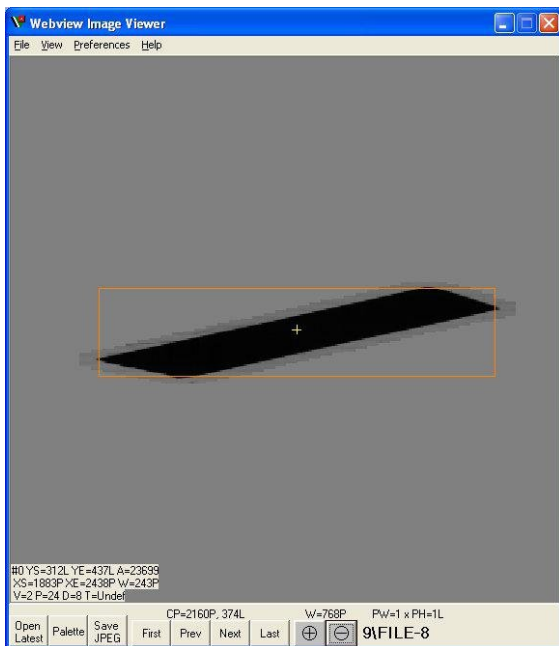
The price includes the camera, software, lens and 15-foot USB cable. Add a light source and computer (if desired) and you are ready to go (Webview offers different light source options, as well as computers, tachometers and accessories).

Setup is easy with our user-friendly, robust software. Power the camera up, plug the included USB cable into a computer, and setup the system in minutes. The software completes an entire sophisticated inspection system. You can choose to display defect images in real-time, or, at slower scan rates, archive 100% of the web. Defects can now be classified according to length, width, area, and other parameters. Complete inspection details including roll maps are created and can be accessed at any time.

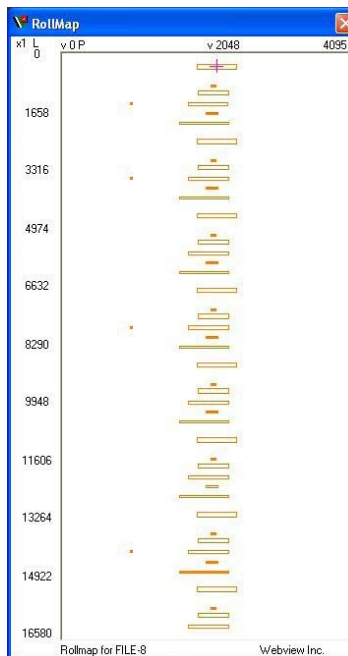
The *Web-i* mounts easily using standard hardware.



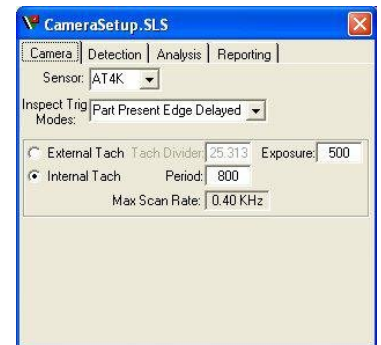
WebScope Oscilloscope



Video Display



Clickable Roll Map



Camera Setup Menu



Threshold Menu

Specifications

Hardware:

- Rugged Anodized Aluminum Housing
- Sensitive CCD Sensor (1024, 2048, or 4096 pixels)
- 40 MHz Pixel Rate
- External Encoder Input
- External Inspection Enable Input
- Alarm or Reject Output Built-In
- Optional I/O Board For More Versatility
- PWM output for lamp control or strobe
- Edu-Key Slot For Upgrades; Can Be Used For RS-232 Communication
- Powerful Xilinx Spartan™ FPGA Processor
- Sophisticated 32-bit Computer
- High-Speed USB 2.0 Interface — 480 Mbps
- Nikon™ 50 mm Lens Included
- Requires 24VDC Power
- Optical Alarm Interface Included
- Standard 1/4-20 mounting hole
- Non-Volatile Program Memory
- Mounts via Standard Hardware
- Includes 15-foot USB Cable

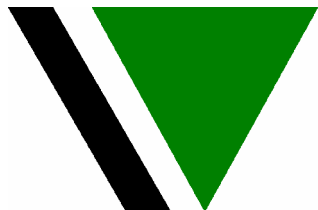
Software:

- Runs on Windows 2000™, Windows XP™, or Windows Vista™
- Two Video Channels
- Bright and Dark Thresholds on Each Channel
- Rate-Of-Change Thresholding
- Sophisticated Defect Classification
- Grayscale or False-Color Defect Display—with Magnification!
- Multiple Product Recipes Can be Stored and Loaded to the Camera
- Archives Images and Creates Clickable Roll Maps
- Easy Export of Data to Access or Excel
- Pixel Compensation
- Auto Level Function
- Can Archive 100% Web Imaging at Lower Scan Rates
- JPEG Image Creation

Dimensions:

- Height: 3.8" (9.65 cm); Width: 3.7" (9.40 cm)
- Length (exclusive of lens): 3.5" (8.89 cm)
- Weight (approx., with lens): 1.8 lbs. (0.8 kg)

Contact **WEBVIEW** for more information:



WEBVIEW, Inc.

3418-A Standish Avenue
Santa Rosa, CA 95407
(707) 588-7982
www.webinspection.com
sales@webspec.com